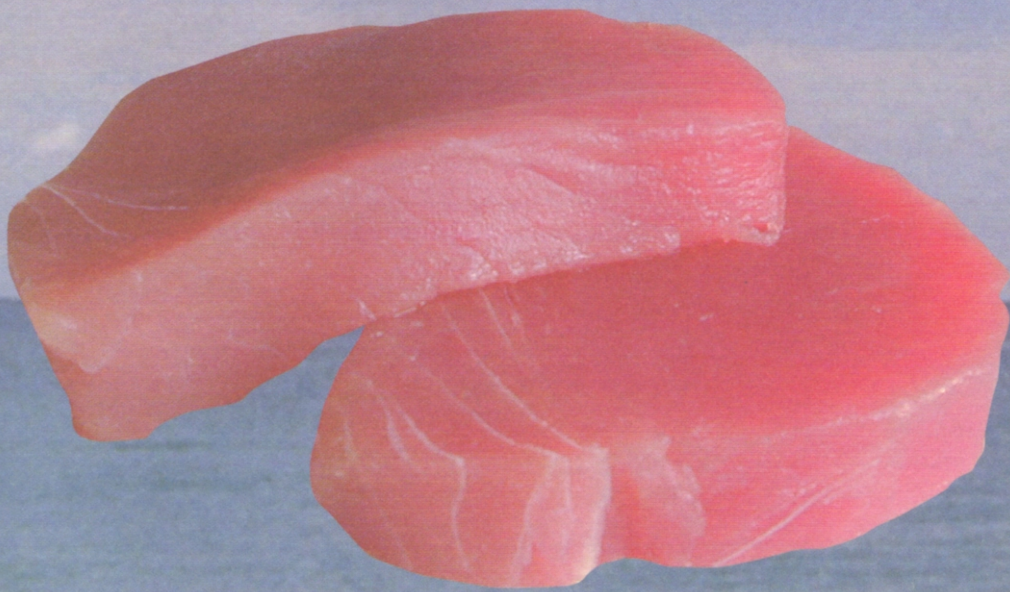


Mc Fish



BERNAQUA

biotechnology environment research nutrition



Mc Fish

Mc Fish is an extruded crumbled marine fish feed. Mc Fish is formulated with the best LT fishmeal available on the market and some other marine proteins. The extrusion process is carried out at low temperature to preserve the qualities of the LT fishmeal and ensure an optimal palatability and digestibility.

Mc Fish is very stable in water and does not pollute the culture tank. The extrusion process permits a special texturization during processing that limits leaching of essential nutrients.

Mc Fish is available in different sizes

- <200 microns
- 200-300 microns
- 300-500 microns
- 500-800 microns

Composition:

LT fishmeal, fish soluble, purified fish oils, phospholipids, wheat and wheat by-products, immuno-modulating substances, yeast extracts, vitamins and minerals, anti-oxidants

Analysis:

Nutrient	Value	Nutrient	Value
Moisture	8,0 %	Vitamin A	15000 IU/kg
Protein	54,0%	Vitamin D3	3000 IU/kg
Lipids	11,5%	Vitamin C	1000 ppm
Ash	7,5 %	Vitamin E	375 ppm
Cellulose	1,0 %	Astaxanthin	25 ppm
Phosphorus	1,5 %		
Total (n-3) HUFA	20 mg/g	Total Energy	4550 Kcal/kg
DHA	7 mg/g	Digestible Energy	4140 Kcal/kg
EPA	12 mg/g		

Instructions for use:

Fish weight (g)	<0,1	0,1 to 0,3	0,3 to 1	>1
Temperature (°C)	Mc Fish 200-300	Mc Fish 300-500	Mc Fish 500-800	Mc Fish 500-800
16-18	6 to 10%	3,4 to 4,2%	2,4 to 3,8%	2,2 to 3,5%
18-20	8 to 12%	4,5 to 5,3%	3,1 to 4,9%	2,8 to 4,5%
20-22	8 to 14%	5,5 to 6,2%	4,5 to 5,8%	4,3 to 5,5%
22-24	8 to 14%	5,8 to 6,4%	5,2 to 6,2%	4,8 to 5,9%
24-26	8 to 12%	5,6 to 6,3%	4,9 to 6,1%	4,5 to 5,7%

Packaging:

Mc Fish is packed in PE buckets of 8,0 kg or PE bags of 20,0 kg.